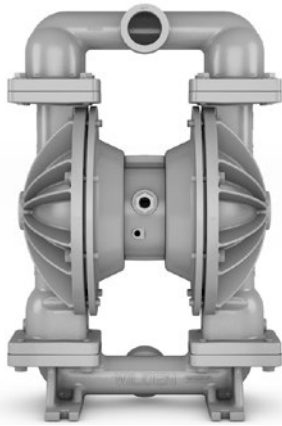


P820/P830 FIT METAL PUMP

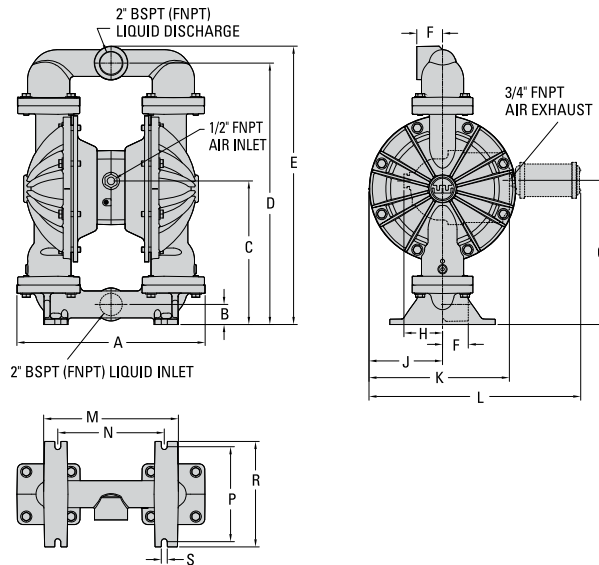
**51 mm (2") Pump
Maximum Flow Rate:
609 lpm (161 gpm)**



P820 METAL

DIMENSIONAL DRAWINGS

P820 Metal



DIMENSIONS

ITEM	METRIC (mm)	STANDARD (inch)
A	453	17.9
B	48	1.9
C	346	13.6
D	630	24.8
E	670	26.4
F	62	2.4
G	347	13.7
H	93	3.7
J	177	7.0
K	338	13.3
L	510	20.1
M	324	12.8
N	257	10.1
P	229	9.0
R	254	10.0
S	14	0.6

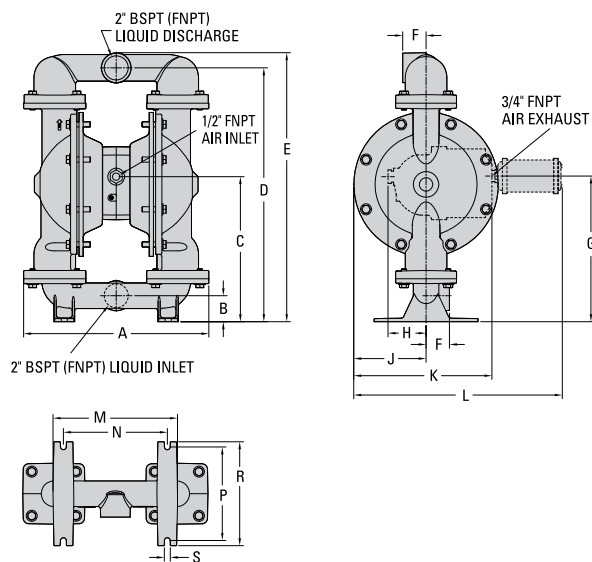
LW0369 REV. A

PUMP DATA

Specifications:

- Ship Weight.. 820 Threaded AL 47 kg (104 lb)
- 820 Threaded SS 73 kg (161 lb)
- 820 Threaded Iron 71 kg (156 lb)
- 830 Flanged AL 54 kg (118 lb)
- 830 Flanged SS 81 kg (178 lb)
- 830 Flanged Iron 82 kg (181 lb)
- Air Inlet..... 19 mm (3/4")
- Liquid Inlet.....51 mm (2")
- Liquid Outlet.....51 mm (2")

P820 Stainless Steel



DIMENSIONS

ITEM	METRIC (mm)	STANDARD (inch)
A	452	17.8
B	64	2.5
C	354	14.0
D	620	24.4
E	658	25.9
F	58	2.3
G	356	14.0
H	93	3.7
J	178	7.0
K	338	13.3
L	510	20.1
M	305	12.0
N	254	10.0
P	229	9.0
R	254	10.0
S	15	0.6

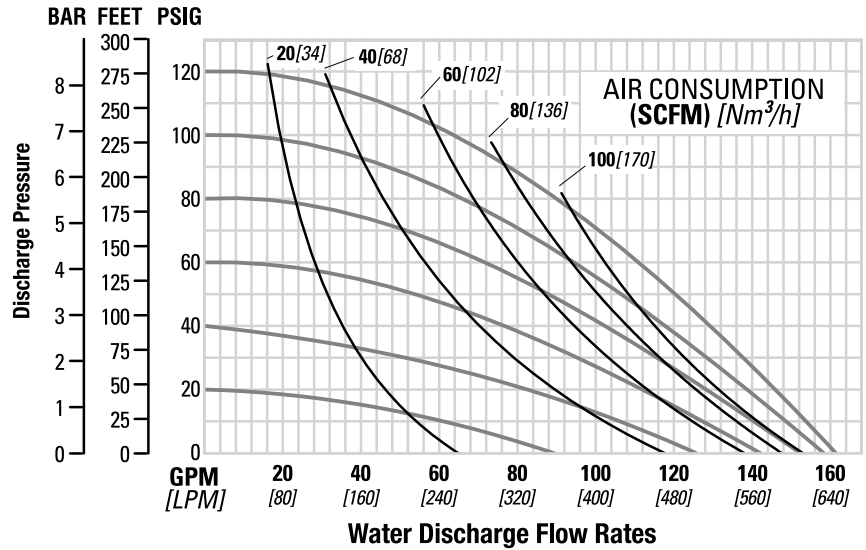
LW0371 REV. A

P820/P830 FIT METAL PUMP

PERFORMANCE

P820/P830 METAL RUBBER-FITTED

Max. Flow Rate.....609 lpm (161 gpm)
 Max. Inlet Pressure8.6 bar (125 psig)
 Max. Solids Passage..... 6.4 mm (1/4")
 Max. Suction Lift.....7.4 m Dry (24.3')
 9.0 m Wet (29.5')



P820/P830 METAL REDUCED-STROKE PTFE-FITTED

Max. Flow Rate.....492 lpm (130 gpm)
 Max. Inlet Pressure8.6 bar (125 psig)
 Max. Solids Passage..... 6.4 mm (1/4")
 Suction Lift.....4.6 m Dry (15.1')
 9.0 m Wet (29.5')

